



**STATEWIDE
ACTIVE
TRANSPORTATION
PLAN**

Statewide Active Transportation Plan

BikeTexas Presentation



Welcome!



Intro – Robin Stallings, BikeTexas

11:30 – 11:35 a.m.

Presentation – Eric Gleason and Greg Reininger, TxDOT and Jeff Whitacre, Kimley-Horn

11:35 a.m. – 12:15 p.m.

Q&A

12:15-12:25 p.m.

Wrap Up and Next Steps

12:25-12:30 p.m.

Guidelines for Participation today

We want to hear from you!

1

As an attendee, your microphone will be muted. Please communicate with us through the chat feature.

2

Submit a question at any time in the chat, we will answer as time allows. Policy and program-level questions are welcome. Project specific questions will require follow-up.

3

Please state your name and affiliation when asking a question or making a comment.

4

A copy of the presentation will be sent after the meeting.

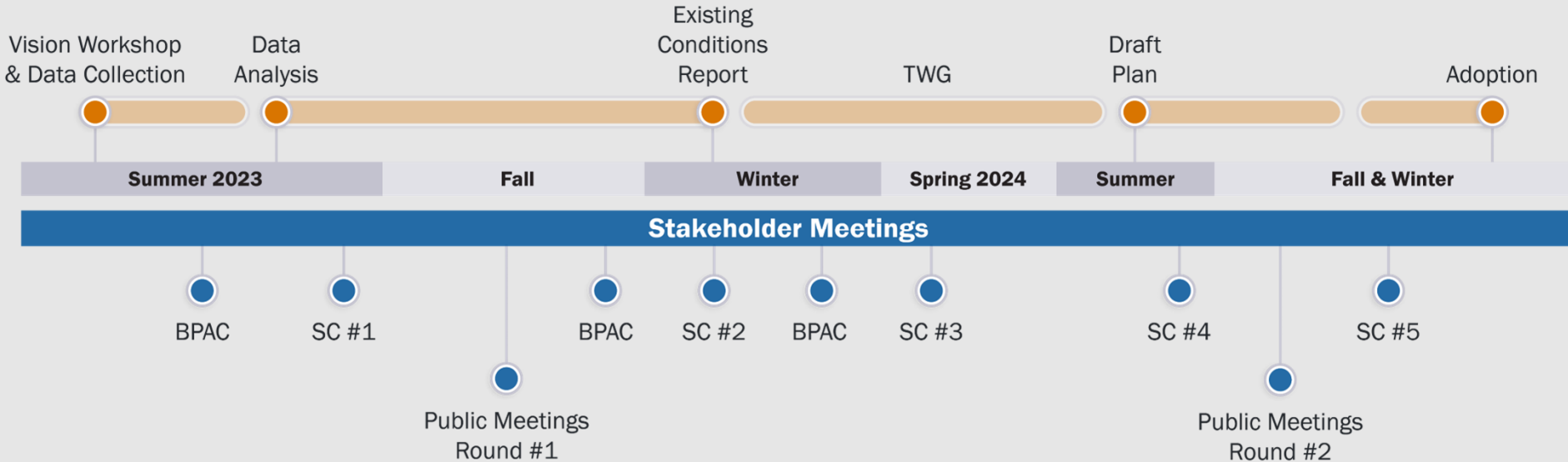


- 1 Plan Vision and Overview
- 2 Outreach Discussion and Takeaways
- 3 Emphasis Areas and Work Group Formation
- 4 Open Discussion and Wrap Up



The Texas Active Transportation Plan is a collaborative effort to advance walking, biking, and rolling as viable options toward a safe, accessible, connected, and fully integrated multimodal transportation system for all Texans.

The plan will support healthy, economically vital, and resilient communities with innovative solutions to increase active mobility.



Steering Committee (SC), Technical Work Group (TWG), Bicycle and Pedestrian Advisory Committee (BPAC)



At your desktop or on your phone?

Go to PollEv.com/tpp808

OR

Create a text message to 22333 and type tpp808

Please enter your name and we will get started soon!



**STATEWIDE
ACTIVE
TRANSPORTATION
PLAN**

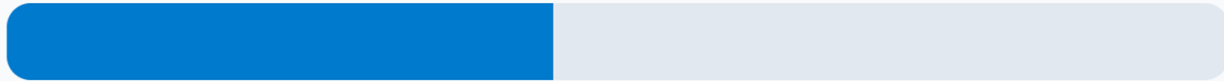




Did you participate in a virtual or in-person
Statewide Active Transportation Plan outreach event
(public meeting or stakeholder meeting)?

 61

A Yes



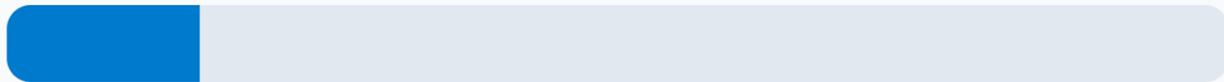
28%

B No



62%

C Unsure



10%



Demand & Risk
for Users



Public Health



Economic Impact



Safety &
Recommended
Countermeasures



Community Need:
Populations Dependent on
Active Transportation

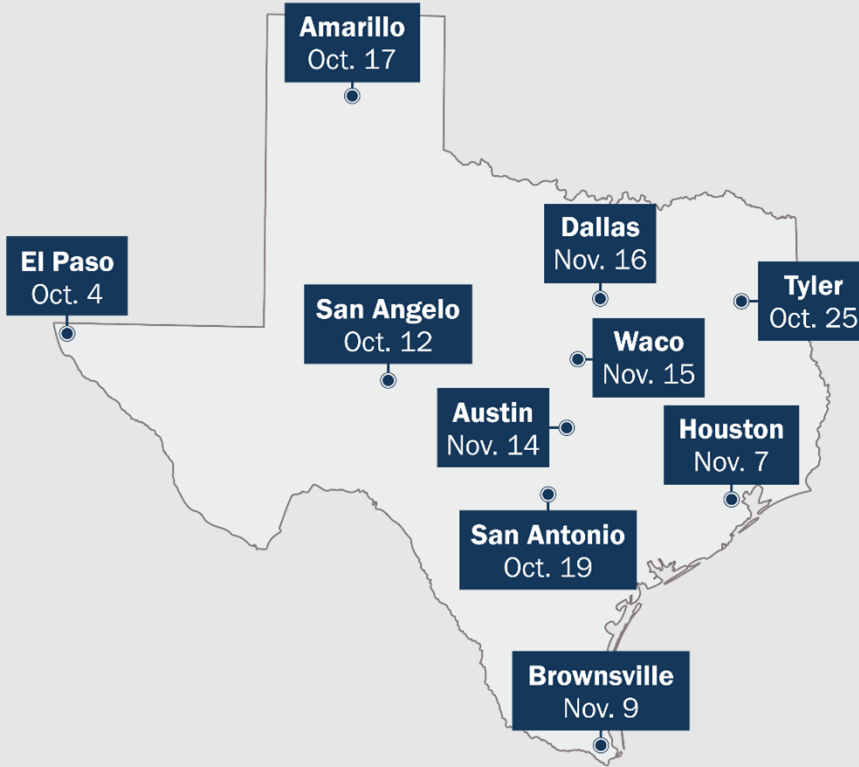


Facility &
Identification of
Barriers

ROUND 1 OUTREACH SUMMARY



Where we have been and what's been done



Outreach Type

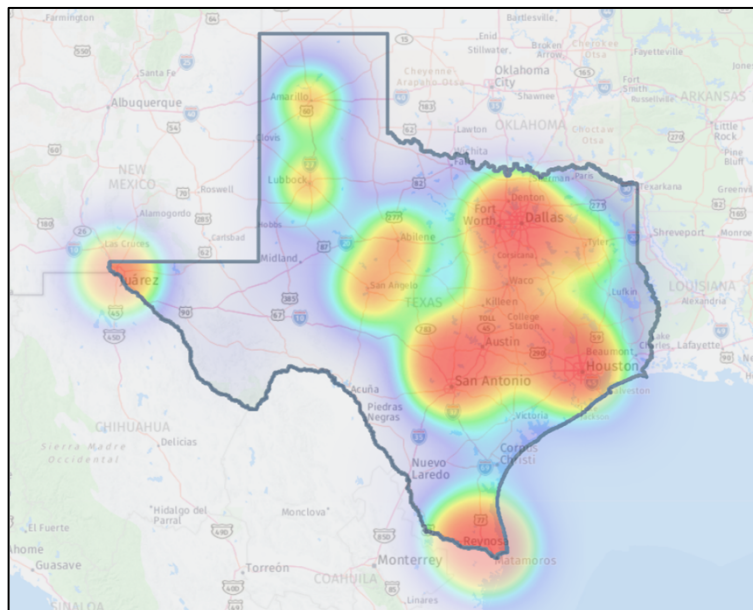
- Online Surveys – **861** responses received
- Interactive Map – **1,904** comments received
- In-person public open house meetings – **140** attendees
- Virtual public open house meeting – **4,239** unique visitors
- Meetings with MPO's – **197** attendees
- Meetings with advocacy groups and stakeholders – **113** attendees
- Community site visits – **134** interactions
- Other activities – TML, APA, Vision Zero Forum
- Pop-up events

Outreach Round 1 – what we heard



1,904

Map comments



-  Draw my active transportation route
-  Draw missing active transportation connection
-  Needs active transportation infrastructure
-  Needs connection to transit
-  Barrier Identification
Barriers that prevents active transportation
-  General Comment

Outreach Round 1 – area specific comment themes



EL PASO – OCT. 4

Health, Paseo Del Norte Trail

SAN ANGELO - OCT. 12

Ports to Plains corridor investments, specific **"rural"** photos

AMARILLO - OCT. 17

Community need, build where it makes sense; smaller projects

SAN ANTONIO – OCT. 19

Connectivity and accessibility

TYLER – OCT. 25

Safety and connectivity for students, sidewalk improvements

HOUSTON – NOV. 7

Multimodal **funding** investment, active transportation facilities in conjunction with I-45 project

BROWNSVILLE – NOV. 9

Funding, lighting in and near active facilities

AUSTIN – NOV. 14

Safety, **transit connections**

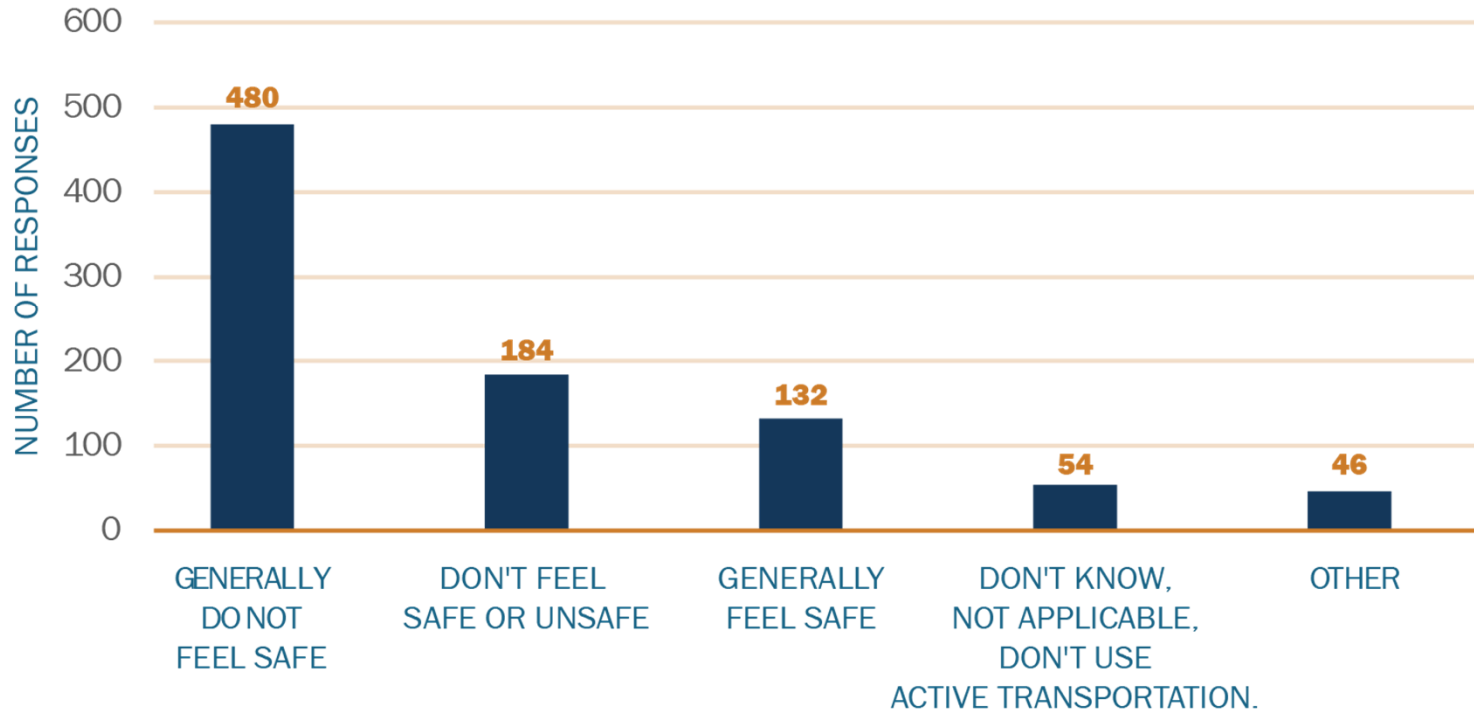
WACO – NOV. 15

Sidewalk **connections to campus**, community need focused improvements

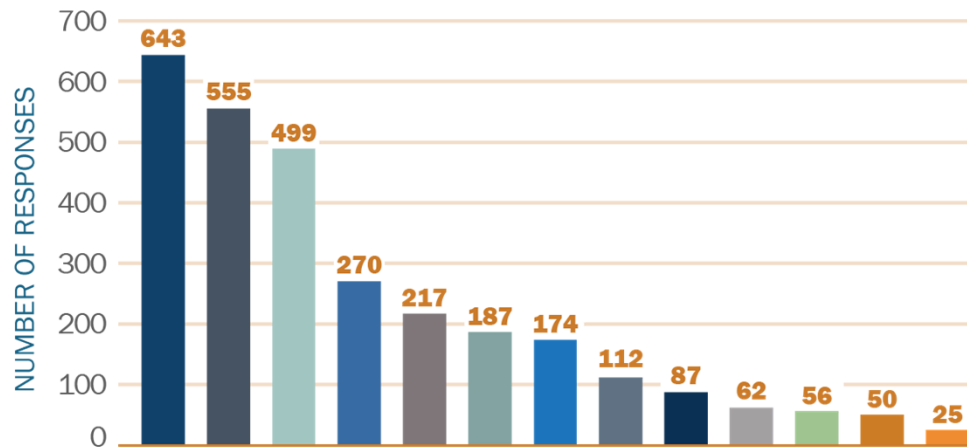
DALLAS – NOV. 16

Intersection design, maintenance, community needs access to DART facilities

Q6. How would you rate the safety of using active transportation in Texas?



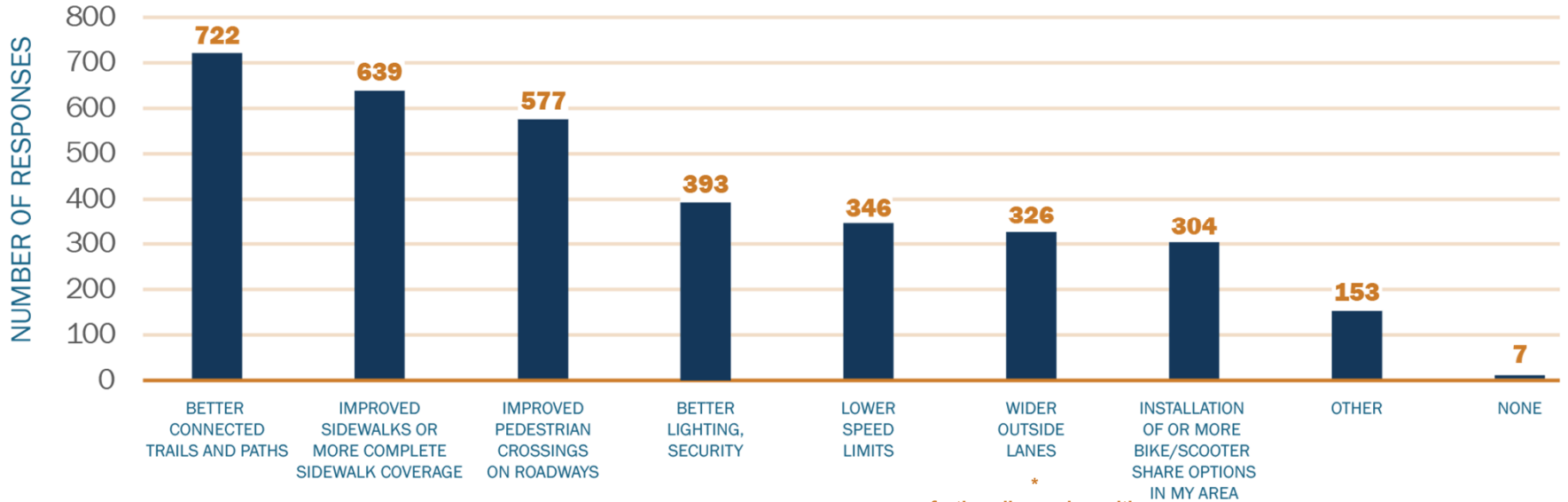
Q5. What keeps you from walking or bicycling more often?



RESPONSE CHOICES

- DON'T FEEL SAFE OR TOO MUCH ROADWAY TRAFFIC ON MY ROUTE
- LACK OF ADEQUATE ACTIVE TRANSPORTATION INFRASTRUCTURE
- TOO MUCH HIGH SPEED TRAFFIC ON MY ROUTE
- NOT CONVENIENT (I.E. DRIVING IS FASTER)
- LACK OF LIGHTING
- DESTINATION TOO FAR
- WEATHER NOT IDEAL
- LACK OF SHOWER AT MY DESTINATION
- DON'T HAVE THE TIME
- MULTIPLE STOPS FOR ERRANDS
- OTHER
- NEED TO PROVIDE SOMEONE ELSE WITH A RIDE (I.E. CHILD TO SCHOOL)
- HEALTH COMPLICATIONS

Q8. What changes or improvements would encourage you to use active transportation modes more often?



*
further discussion with participants indicated most perceived this to be wider outside bike lanes



Rank all current active transportation facilities in Texas.

 52

37%



Poor — 1

40%



2

23%



Fair — 3

0%



4

0%



Excellent — 5

EMPHASIS AREAS & WORK GROUP FORMATION



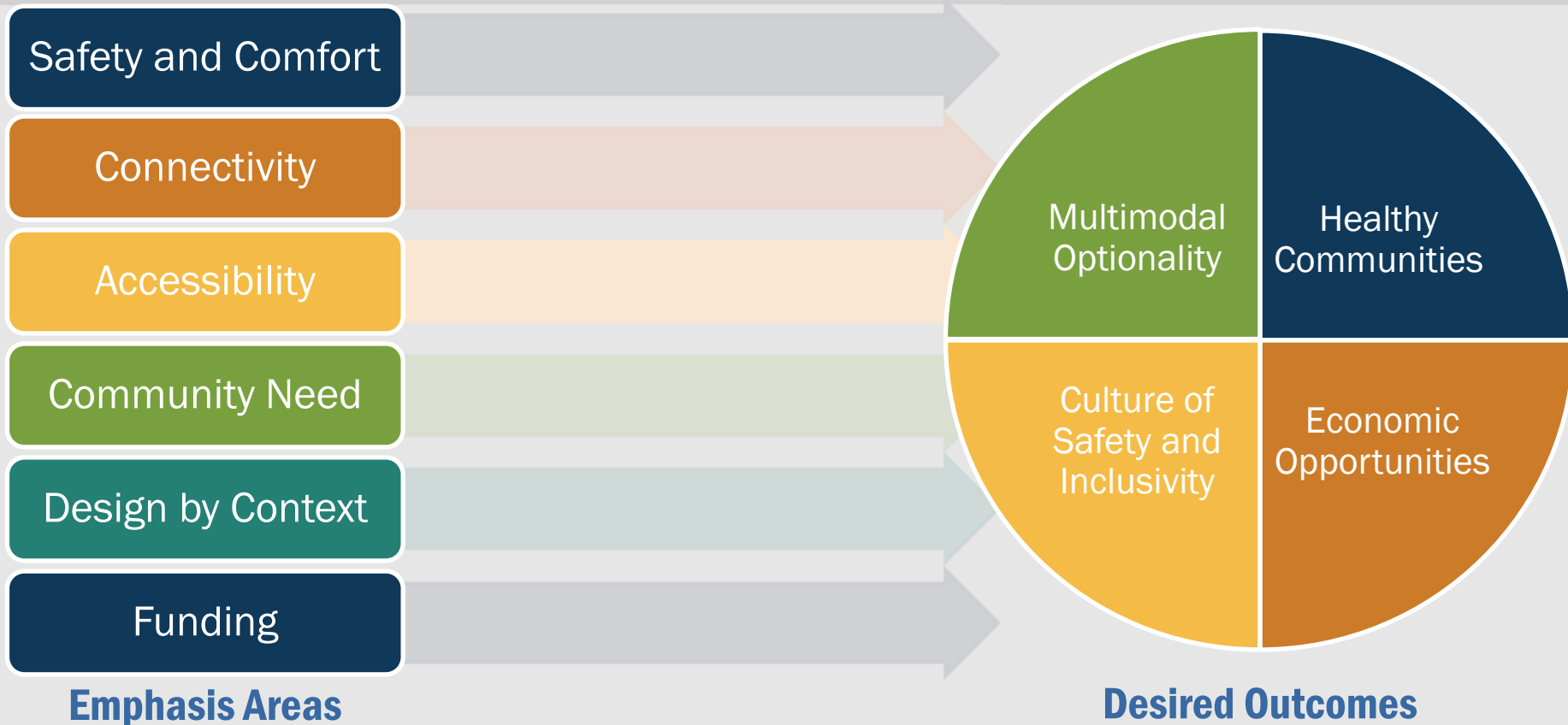
Outreach Priority Results – Overall



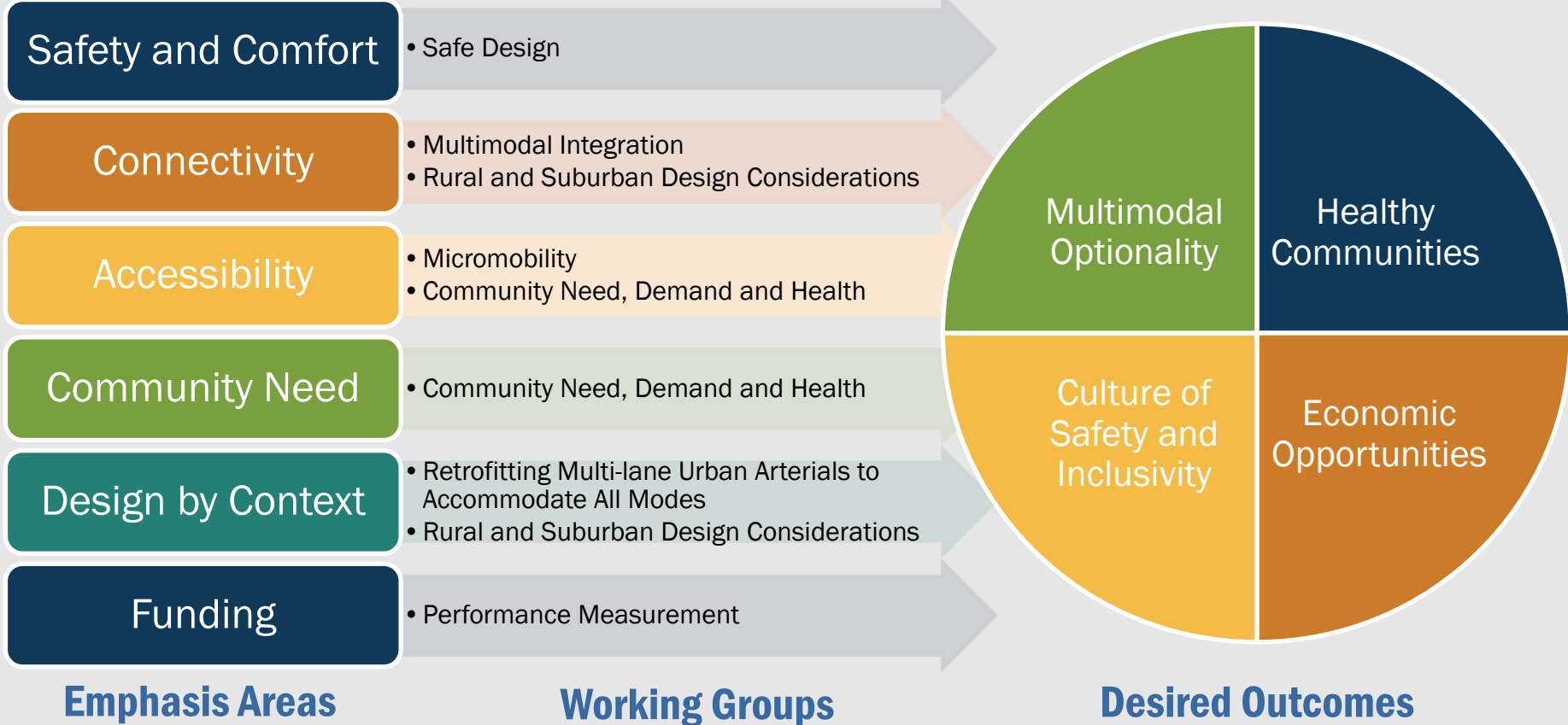
Most important



(SATP) Plan Emphasis Areas will lead to Desired Outcomes



(SATP) Plan Emphasis Areas will lead to Desired Outcomes





Topic	Description
Safe design	Highlight situations that are not included in the RDM. Explore best practices and develop guiding principles.
Retrofitting multi-lane urban arterials to accommodate all modes	Identify challenges and opportunities with urban arterials. Recommend best practices and future actions.
Multimodal integration	Develop policy recommendations to foster integration of all modes e.g. critical first and last mile connections, interoperability, facility requirements.
Community need, demand and health	Explore needs, opportunities and partnerships to provide active transportation infrastructure or infrastructure upgrades where it is needed most

Interested in participating in a work group?

Email

Gregory.Reininger@txdot.gov

(include what group on the left you would like to join)



Topic	Description
Rural and Suburban design considerations	Focusing on unique attributes of rural and suburb transportation networks and communities. What scale of planning and improvements are needed?
Micromobility	Explore how micromobility interacts with other road uses. Develop best practices for how to integrate micromobility into the existing transportation system.
Performance measures	Develop meaningful performance measures to track progress for next plan update

Interested in participating in a work group?

Email

Gregory.Reininger@txdot.gov

(include what group on the left you would like to join)



The plan should most focus on connecting what of the following?:

50



In three words or less, what is the largest barrier for active transportation in Texas?

 51

Responses	Upvotes	Downvotes
Priority of cars over othr modes	9	0
Deadly, high-speed arterials and highways.	7	0
Anti Bike Culture	6	0
Poorly designed streets	7	1
Car and convenience culture.	5	0
Political will	5	0
High speeds	5	0
Prioritizing autos	5	0
Car brain	4	0
Over-prioritizing cars	4	0
Lack of political courage	4	0
Motorist have priority	4	0
Political will	4	0
automobile entitlement to infrastructure	3	0
Highways / road building	3	0
Lack of Representation	3	0
Safety, Culture and Politics	3	0
Lack of infrastructure for safe travel (no sidewalks, bike lanes, buses)	3	0
Car-centric infrastructure	3	0
safety, car-centric planning	3	0
Local funding	4	1
Funding	2	0
Safety infrastructure funding	2	0
Separated infrastructure	2	0
Cars	2	0
Infrastructure, protected bike lanes, safety	2	0
Population mindset	2	0
SAFETY	2	0
Funding	4	2
TxDOT doesn't care.	1	0
wide highways	1	0
Skeptical local officials	1	0
Cars	1	0
Political inertia	0	0
Political priority autos	0	0

Responses	Upvotes	Downvotes
education, awareness, and equity	0	0
Vehicle conflict	0	0
I was told funding, but I think, for a lack of a better phrase, its too challenging to tackle for staff	0	0
get mom's involved: they will be taking kids to schools but lights are too quick, no refuges, etc (speaking of Dallas area)	0	0
Connections Safety Landuse	0	0
concrete lobby	0	0
comfort & safety	0	0
Lack of infrastructure.	0	0
Land planning practices	0	0
Funding	0	1
Funding	0	1
Funding, education, politics	0	1
Republicans refuse funding	1	2
imagination	0	1
Public interest	1	2
Funding	1	2

In three words or less, what is the most vital thing to be included or considered in the statewide active transportation plan?

 51

Responses	Upvotes	Downvotes
How to deprioritize expansion of roadways to focus on multimodal transportation	15	0
Reallocate highway funding	13	0
Connectivity	14	1
Reprioritization of state funding from roads to multimodal projects	12	0
High-Quality Infrastructure	13	1
"mandatory protected bikelanes"	11	0
Separated bike lanes	10	0
Complete streets	10	0
Buses, Sidewalks, Bike lanes	10	0
Slower speed design	9	1
Connectivity & safety	7	0
Changing the culture around bike and ped	7	0
Buffered bike lanes/sidewalks	7	0
TxDOT needs to improve relationships with city governments.	6	0
Connectivity and education	6	0
Road design, connectivity	6	0
Trains, bikes	7	1
Urban interior development	6	0
Community buy in	7	1
Change mindset, active encouragement	4	0
Safety for all	5	1
Complete Streets Checklist & Policy Templates	4	0
Dedicated funding	4	0
State-local cooperation	4	0
Halting highway expansions.	3	0
National Historic Trails	5	2
Retrofitting best practices	3	0
Rural interconnection	4	1
Implementation timelines	3	0
Focus on high use areas	2	0
Clean air	2	0
communicating clear vision	2	0

Responses	Upvotes	Downvotes
funding feasibility for local match	2	0
Cross state trails	3	1
Inspiring vision that opens minds	3	1
Political allies	2	0
Many many buses	3	1
Safety for all	3	1
connectivity, accessibility, vision 0	2	0
Connections	2	0
Connector trails	1	0
Fresh air	1	0
TxDOT made an enemy of San Antonio and other municipalities when they took back roads that were part of local bike plans.	2	1
Funding mechanisms	1	0
Inclusiveness	1	0
Protected ped/bike - NOT striped ped/bike lanes in traffic	0	0
Safety and Lots of Connections	0	0
SUPs all state-facilities.	1	1
"bang for buck"	1	1
POLICY	0	0
Local issues	0	2



Additional Q&A

moderated by Robin Stallings

THANK YOU

for your help in developing the first Active Transportation Plan for Texas!



Greg Reininger

Bicycle & Pedestrian Planner

Public Transportation Division

Texas Department of Transportation

☎ (737) 285-6184

✉ Gregory.Reininger@txdot.gov

Bonnie Sherman

Bicycle & Pedestrian Program Supervisor

Public Transportation Division

Texas Department of Transportation

☎ (512) 571-9825

✉ Bonnie.Sherman@txdot.gov



**STATEWIDE
ACTIVE
TRANSPORTATION
PLAN**

