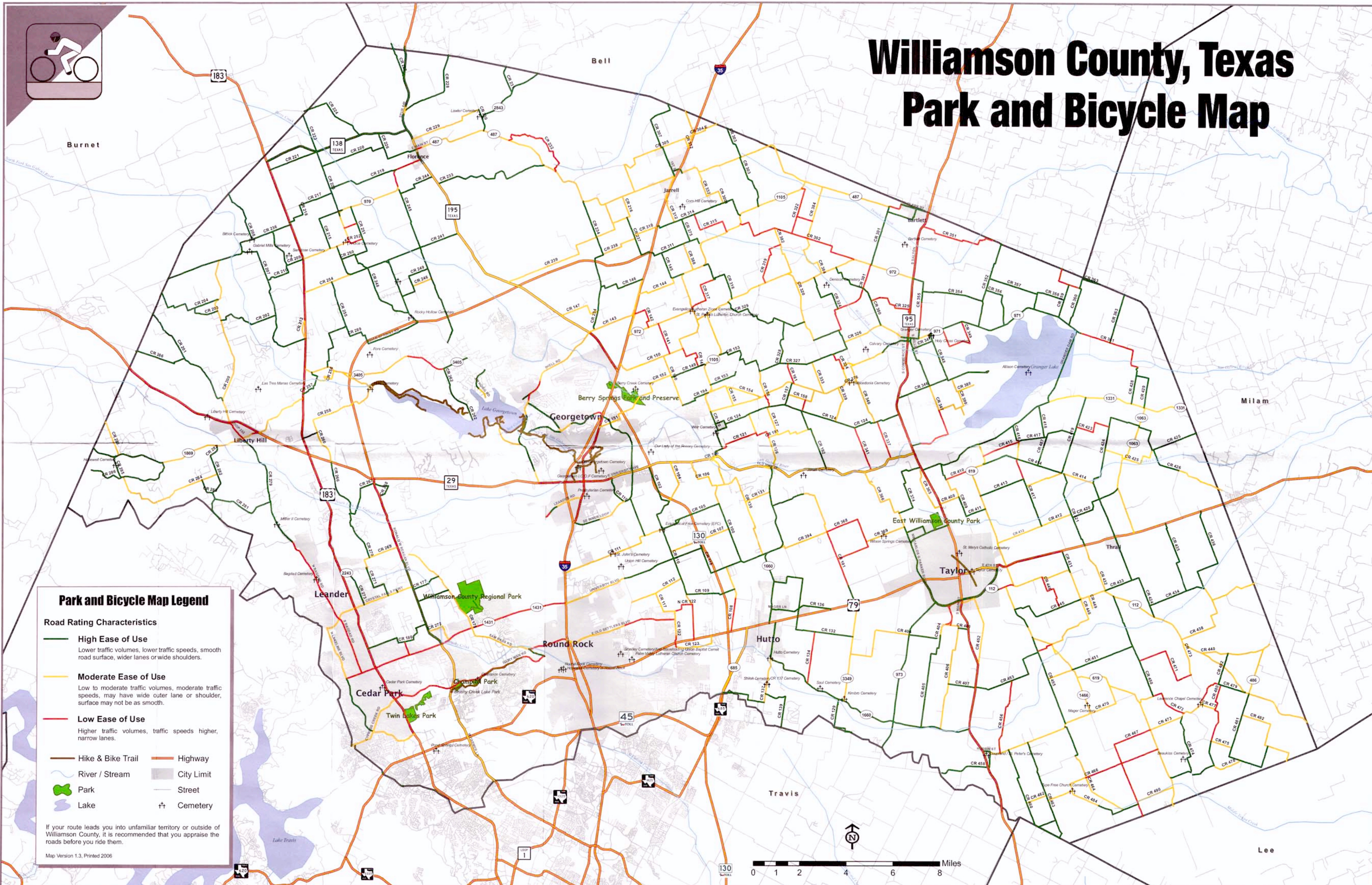




# Williamson County, Texas Park and Bicycle Map



**Park and Bicycle Map Legend**

**Road Rating Characteristics**

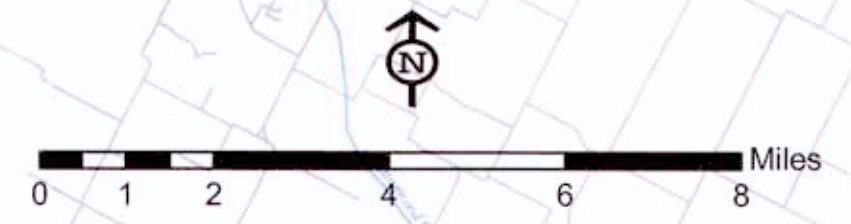
- High Ease of Use**  
Lower traffic volumes, lower traffic speeds, smooth road surface, wider lanes or wide shoulders.
- Moderate Ease of Use**  
Low to moderate traffic volumes, moderate traffic speeds, may have wide outer lane or shoulder, surface may not be as smooth.
- Low Ease of Use**  
Higher traffic volumes, traffic speeds higher, narrow lanes.

**Other Symbols:**

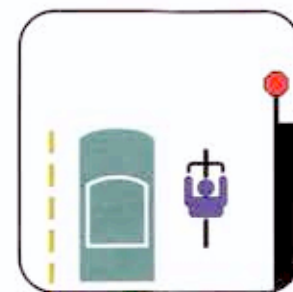
- Hike & Bike Trail
- River / Stream
- Park
- Lake
- Highway
- City Limit
- Street
- Cemetery

If your route leads you into unfamiliar territory or outside of Williamson County, it is recommended that you appraise the roads before you ride them.

Map Version 1.3, Printed 2006



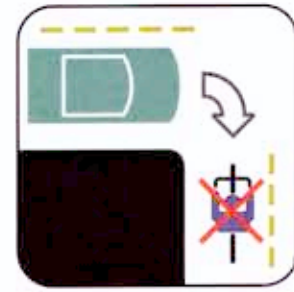
# Bicycle Safety Tips



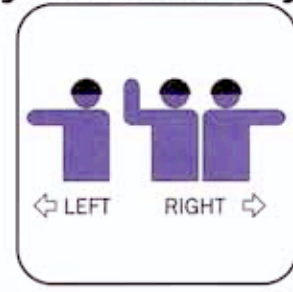
**OBEY TRAFFIC SIGNS AND SIGNALS**  
Bicycles must drive, by law, like other vehicles if they are to be taken seriously by other motorists.



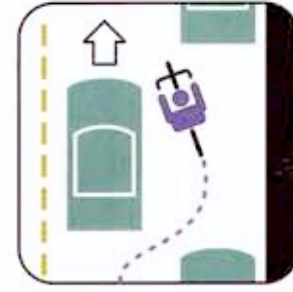
**NEVER RIDE WITH HEADPHONES; WEAR A HELMET**  
Always wear a helmet. Never wear headphones while riding a bike.



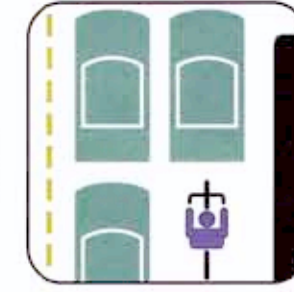
**NEVER RIDE AGAINST TRAFFIC**  
Motorists aren't looking for bicyclists riding on the wrong side of the road. State law and common sense require that bicycles are driven like other vehicles.



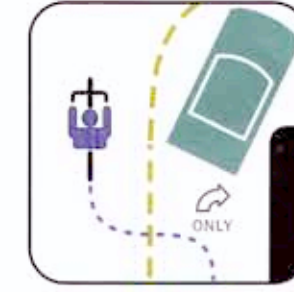
**HAND SIGNALS**  
Hand signals tell motorists and pedestrians what you intend to do. Signal as a matter of law, of courtesy, and of self-protection.



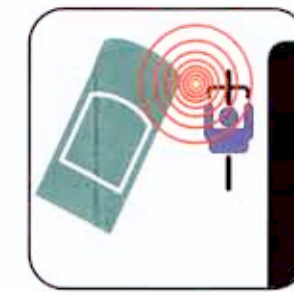
**DON'T WEAVE BETWEEN PARKED CARS**  
Don't ride out from between parked cars unless they are far apart. Motorists may not see you enter traffic.



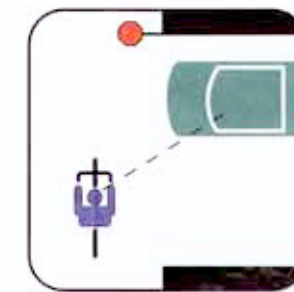
**RIDE IN MIDDLE OF LANE IN SLOW TRAFFIC**  
Get in the middle of the lane at busy intersections and whenever you are moving at the same speed as traffic.



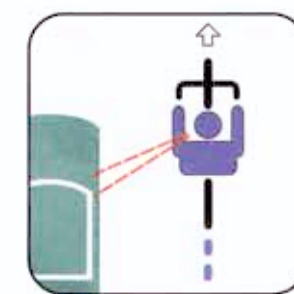
**FOLLOW LANE MARKINGS**  
Don't turn left from the right lane. Don't go straight in a lane marked "right-turn only."



**DON'T PASS ON THE RIGHT**  
Motorists may not look for or see a bicycle passing on the right. Learn to scan the road behind you while riding. Look back over your shoulder without swerving to the left, or use a rear-view mirror.



**MAKE EYE CONTACT WITH DRIVERS**  
Assume that other drivers don't see you until you are sure that they do. Eye contact is important with any driver which might pose a threat to your safety.



**SCAN THE ROAD BEHIND**  
Learn to look back over your shoulder without losing your balance or swerving. Some riders use rear-view mirrors, but still look before turning.

## Berry Springs Park and Preserve

Berry Springs Park and Preserve is located on 300 acres between IH 35 and CR 152 with the main entrance off of CR 152. The park is designed for nature lovers with recreational uses including camping, hiking, bird watching and fishing. The park features a playscape, picnic shelters and a 2.5 mile hike and bike trail.

**Hours:** 7:30 a.m. to 10:00 p.m. daily. Overnight camping available.  
**Entrance Fees:** Free. Fees apply for overnight camping and pavillion rental, call 512-260-4283.  
**Address:** 1801 County Road 152, Georgetown, TX

**Key:**  
 1 Information Kiosk  
 2 Camping Area  
 3 Group Pavilion  
 4 Restroom  
 5 Playground  
 6 Fishing Platform  
 7 Bird Viewing Area

## Southwest Regional Park

The Southwest Regional Park features ten soccer fields, two softball fields, a football field circled by a 400-meter track, eight tennis courts, six basketball courts, a playscape, and an 18 hole disk golf course. A crushed granite hike and bike trail runs along the perimeter of the developed parkland. A featured attraction is the Cedar Rock Railroad, a miniature railroad open on weekends that takes passengers of all ages on a 1 1/3 mile ride through the park.

**Hours:** Sunrise - Sunset  
**Entrance Fees:** Free, except for parking during soccer tournaments and special events.  
**Address:** 3005 County Road 175, Leander, TX

## Brushy Creek Regional Trail

Hikers, bikers, runners and nature walkers can be found daily on the Brushy Creek Regional Trail. The trail currently stretches one mile northeast of the Creekside Trail Head west to the City of Cedar Park Brushy Creek Lake Park at Farmer Lane. The trail is approximately 4 miles and is constructed mostly of crushed granite.

## Twin Lakes Park

Twin Lakes Park is a 50 acre tract of land that is a portion of 305 acres of state-owned property. Amenities include a pavillion, a fishing dock, and several acres open for picnics and hikes.

**Hours:** Sunrise to sunset  
**Address:** 2300 S. Bell Blvd., Cedar Park, TX

## Eastern Regional Park

Located in Taylor, this park's large, covered arena is available to rent. The arena is 60,000 square feet, seats 3,000 and is ADA accessible and compliant. It has paved parking for 700 cars, restrooms, a concession building and WW roping pens and bucking shoots. Rental of the facility is available through the Taylor Rodeo Association by John Carter at 512-352-1500.

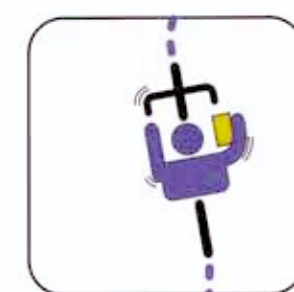
**Reservations:** 512-352-1500  
**Fee:** Varies depending on needs.  
**Address:** 210 Carlos Parker Blvd., Taylor, TX

**Community partners and useful links:**  
 Anderson Mill MUD: [www.ammud.org](http://www.ammud.org)  
 Army Corps of Engineers: [www.swf-wc.usace.army.mil](http://www.swf-wc.usace.army.mil)  
 Austin Cycling Association: [www.austincycling.org](http://www.austincycling.org)  
 Brushy Creek MUD: [www.brushymud.com](http://www.brushymud.com)  
 City of Cedar Park: [www.ci.cedar-park.tx.us](http://www.ci.cedar-park.tx.us)  
 Fern Bluff MUD: [www.fernbluffmud.org](http://www.fernbluffmud.org)  
 City of Georgetown: [www.georgetown.org](http://www.georgetown.org)  
 City of Hutto: [www.hutto.org](http://www.hutto.org)  
 City of Leander: [www.ci.leander.tx.us](http://www.ci.leander.tx.us)  
 City of Round Rock: <http://www.roundrocktexas.gov/>  
 City of Taylor: [www.ci.taylor.tx.us](http://www.ci.taylor.tx.us)  
 Texas Department of Transportation: [www.dot.state.tx.us/txdot.htm](http://www.dot.state.tx.us/txdot.htm)  
 Williamson County: [www.wilco.org](http://www.wilco.org)  
 WCCHD: [www.publichealthwilliamson.org](http://www.publichealthwilliamson.org)

**Special thanks to all who contributed in the development of this map.**  
 Williamson County Commissioners' Court:  
 - Judge John Doerfler  
 - Precinct 1 - Lisa Birkman  
 - Precinct 2 - Greg Boatright  
 - Precinct 3 - David Hays  
 - Precinct 4 - Frankie Limmer  
 Williamson County Parks and Recreation Department  
 Williamson County Wellness Collaboration  
 - Scott and White Medical Center  
 - St. David's Georgetown Hospital  
 - St. David's Round Rock  
 - John's Community Hospital  
 - WCCHD  
 - Texas Cooperative Extension  
 Americorps® VISTA  
 The following individuals: Ben Clark, Peggy Fink, Sherry Fuller, Dennis Rust, Norman Schiele, Lu Shannon, and Karen Thompson.



**CHOOSE THE BEST WAY TO TURN LEFT**  
There are two ways to make a left turn. (1) Like an auto: signal, move into the left turn lane and turn left. (2) Like a pedestrian: ride straight to the far-side crosswalk. Walk your bike across.



**KEEP BOTH HANDS READY TO BRAKE**  
You may not stop in time if you brake one-handed. Allow extra distance for stopping in the rain, since brakes are less efficient when wet.



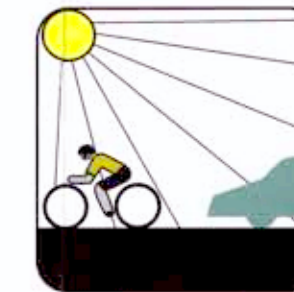
**USE LIGHTS AT NIGHT**  
The law requires a white headlight (visible from at least 500 feet ahead) and a red rear reflector or taillight (visible up to 300 feet from behind).



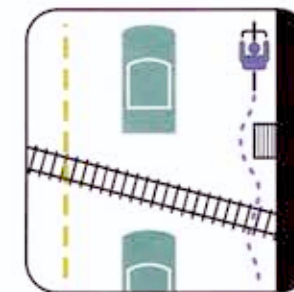
**DRESS APPROPRIATELY**  
In rain wear a poncho or waterproof suit. Dress in layers to adjust to temperature changes. Wear a helmet. Wear bright colored clothing to be more visible to motorists.



**KEEP BIKE IN GOOD REPAIR**  
Adjust your bike to fit you and keep it working properly. Check brakes and tires regularly. Routine maintenance is simple and you can learn to do it yourself.



**AVOID RIDING INTO THE SUN**  
The sun's light can be blinding. Riding East in the a.m. and West in the p.m. makes it difficult for motorists to see bicycles.



**AVOID ROAD HAZARDS**  
Watch out for parallel-slat sewer grates, gravel, ice or debris. Cross railroad tracks at right angles.

www.sunspresstire.com  
 Printed By:  
 www.wcbikemap.org  
 Phone: 512-943-3600  
 Georgetown, TX 78626  
 100 West 3rd Street  
 WCCHD  
 For more information:

The Williamson County Bicycle Map was developed to aid bicyclists in finding their way safely through Williamson County and local jurisdictions, including WCCCHD, disclaim responsibility and shall not be held accountable in any manner or loss, damage, or injury that may be suffered by bicyclists. Riders assume the risk for their own safety when traveling on the roadways in the county.

Williamson County and Cities Health District (WCCHD)  
 Serving the people of Williamson County since 1943  
 WCCHD, Friends of Public Health, and the Williamson County Parks and Recreation Department encourage you to Get up and get out!  
 and discover Williamson County's beautiful parks and trails.

Williamson County  
 1848  
 WILLIAMSON COUNTY AND CITIES HEALTH DISTRICT  
 WCCHD  
 PARKS AND RECREATION DEPARTMENT

